

## Standard Preparation Freestanding Hand Wash Basin

ITEM # \_\_\_\_\_

MODEL # \_\_\_\_\_

NAME # \_\_\_\_\_

SIS # \_\_\_\_\_

AIA # \_\_\_\_\_

**132951 (NLPD)**

Free-standing hand wash sink with 1 upper bowl with mixer spout and drain hole and 1 lower bowl with mixer spout, drain hole and support grid

### Short Form Specification

**Item No.** \_\_\_\_\_

Made from 304 AISI stainless steel. Upper bowl mm340x240x150h with mixer spout and drain hole. Lower bowl mm 340x340x160h with mixer spout, drain hole and support grid.

### Main Features

- Easy to clean thanks to the rounded bowl and corners.
- Washbasin can be equipped with a wall panel plus paper and soap dispensers as optional extras.
- Sturdiness, stability and reliability of table accurately tested.

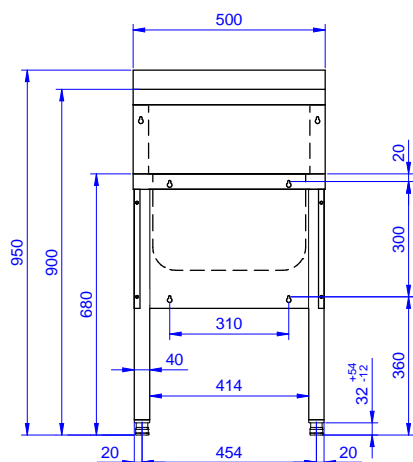
### Construction

- Mixer spout, 1/2" in diameter and drain hole supplied as standard.
- Constructed entirely in 18/10 stainless steel.
- Sound deadened pressed bowl with rounded corners and all-round lip to prevent overspill.
- Rear upstand 30 mm in height and 1.5 mm thick.
- Syphon included in the delivery.
- Upper hand washbasin (dimensions 300x240x150) and a lower drainage sink with a steel support grid
- Square section feet (40x40mm).
- Wide range of taps are available to suit every need.
- 100 mm upstand with 10 mm radiused corner and 13 mm deep, designed to be used against a wall.

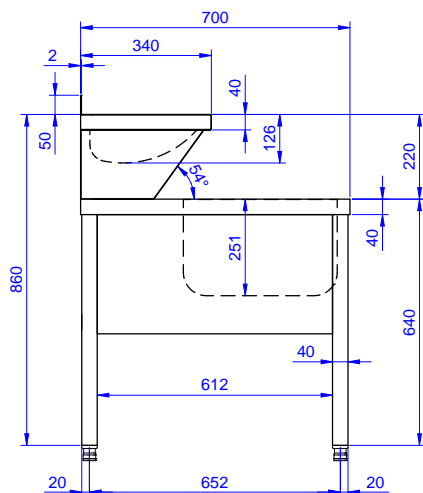
**APPROVAL:** \_\_\_\_\_

## Standard Preparation Freestanding Hand Wash Basin

### Front



## Side

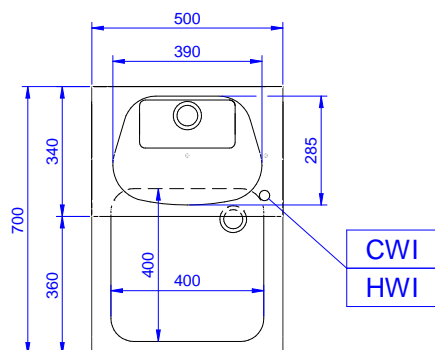


**CWI1** = Cold Water inlet 1  
(cleaning)

**D** = Drain

**HWI** = Hot water inlet

**Top**



## Water:

**Water drain outlet size:** 1"1/2

### Key Information:

**External dimensions,**  
**Width:** 500 mm

**External dimensions, Depth:** 700 mm

**External dimensions,  
Height:** 950 mm

<b>Bowls number</b>	1
---------------------	---

**Bowl dimensions** 340x340xH160

**Worktop thickness:** 50 mm

**Net weight:** 50 kg